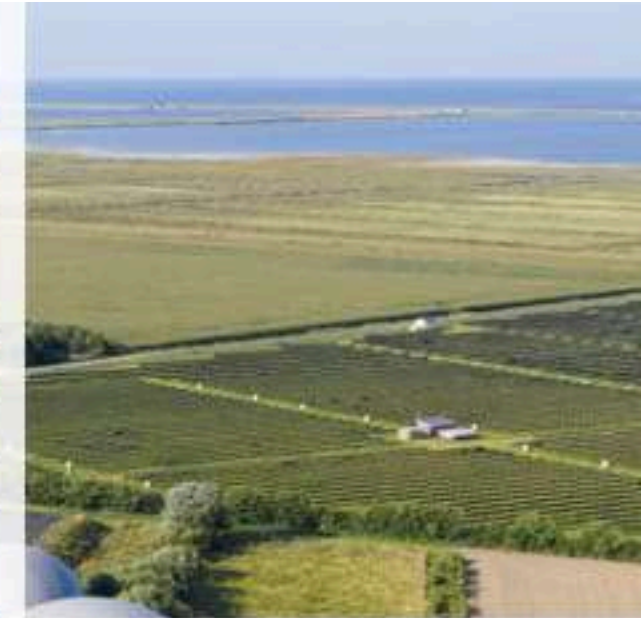
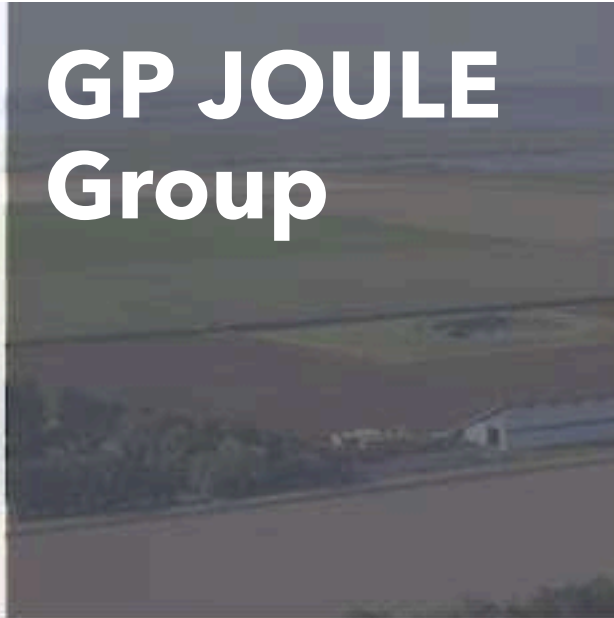


# GP JOULE Group

**Business Unit  
Think Hydrogen**



- The **founders of** GP JOULE, Heinrich Gärtner and Ove Petersen, have been developing renewable energy projects for more than 15 years.



Heinrich Gärtner



Ove Petersen

- Their background in agriculture explains the diversity of GP JOULE's business lines, the development of value creation and the **sustainable** approach.

- The economic sector of renewable energies is situated bang in the middle of the industrialisation 4.0 drive thanks to the overlapping applications in mobility, heat and industry.

- The **vision of** implementing **100 per cent renewable energies** drives the shareholders and employees both in the individual projects and in dialogue with society and politics.

**>750**

MW Power plant capacity -  
installed since 2003

**350**

employees at  
10 sites

**>121**

PV projects -  
implemented since 2009

**92000**

charging points in the  
CONNECT network

**1.1 GW (p)**

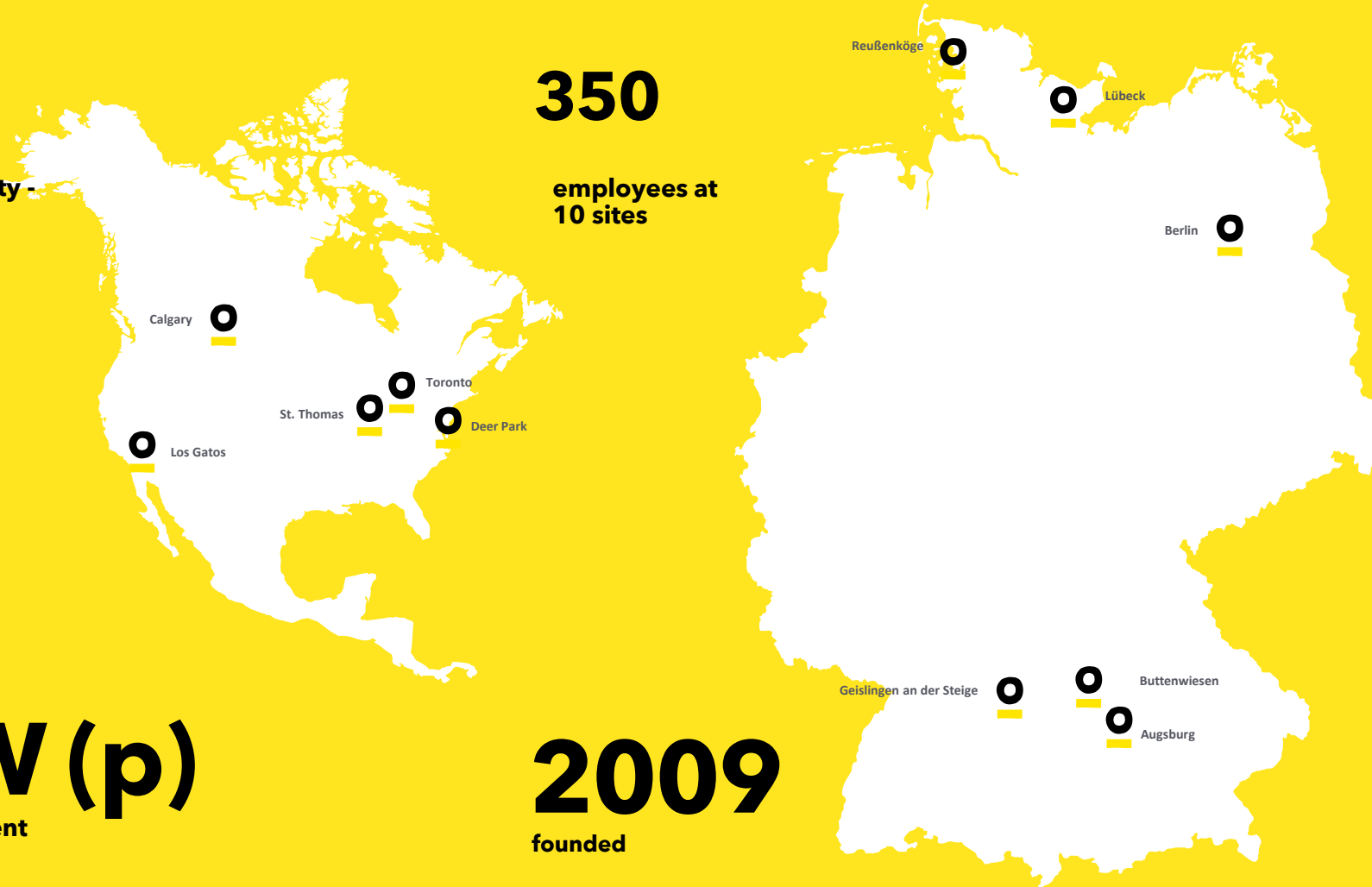
Operational management  
commercial/technical  
wind/solar

**2009**

founded

**>14**

wind farm projects -  
implemented since 2009





## Services of the GP JOULE Group.



## Your partner for hydrogen ecosystems

- Do you want to take your renewable electricity to the next level of value creation?
- Would you like to run your fleet on green hydrogen?
- Do you need hydrogen for your industrial processes?
- Do you want to operate a hydrogen filling station?
- Would you like to make your region/company fit for the energy future?



Are you looking for **the** right partner for your hydrogen project?



## Our solutions

The GP JOULE Group's THINK H2 business unit develops hydrogen ecosystems along the entire value chain:

- **Integration of** regeneratively generated electricity
- **Production of** green hydrogen by means of electrolysis at your site
- **Compression, storage and transport of** the hydrogen to the respective hydrogen filling station
- **Marketing** at hydrogen filling stations for vehicles such as buses, trucks, cars
- **Consulting on** hydrogen mobility solutions



## Our strengths

- **Experience** with regard to realising and operating hydrogen projects (see eFarm)
- **Know-how** in terms of technology, the legal framework, business models and hydrogen markets
- **Support** for decentralised models for regional value creation (involving regional stakeholders)
- **Access to** renewable electricity generation networks (GP JOULE is an established player when it comes to implementing large wind and solar projects)
- **Networking** with stakeholders in the hydrogen mobility sector



## How can you work with us?

- We will become partners in a joint operating company
- We realise your hydrogen project to turnkey readiness (as general contractor)

## Germany's largest green hydrogen mobility project in operation

**eFarm** maps the entire value chain from the production to the use of green hydrogen in mobility.

- Joint company with 20 shareholders
- 16 million euros of project volume

### GP JOULE's services in this project:

- Concept development (from 2017)
- Project development (technical, commercial, legal)
- Realisation and construction
- Organisation of the operating company
- Financing and funding management
- Operations management (operational, technical and commercial)
- Commercialisation of the hydrogen

**2**

H2 filling  
stations

**5**

Production  
locations

**1.125 MW**  
total output

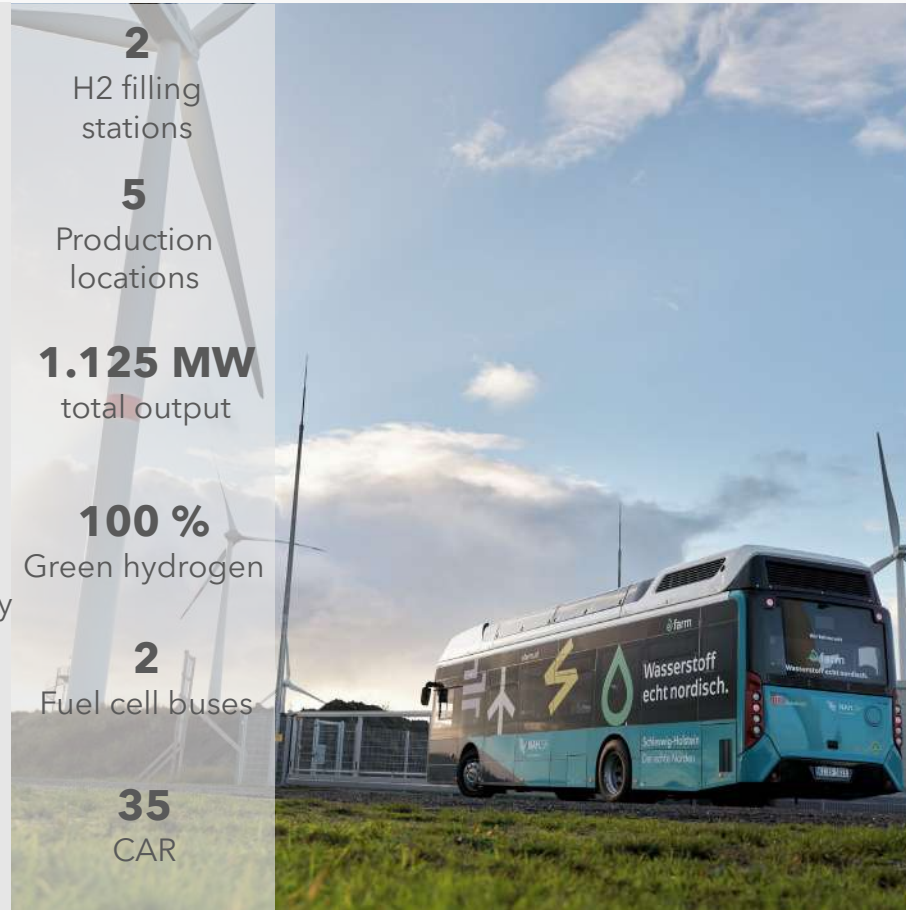
**100 %**

Green hydrogen

**2**

Fuel cell buses

**35**  
CAR







**Hydrogen production location in Bosbüll, North Frisia**





Mobile hydrogen storage in Bosbüll, North Frisia





Hydrogen filling station in Niebüll



# More Hydrogen Projects in Realization



**HY.CITY.Bremerhaven**  
2 MW EL, 1 Tankstelle  
Realisierung ab: Q1/2021



**H2Emden**  
5 MW EL, 3 Tankstellen  
Realisierung ab: Q1/2021



**HY.Waiblingen**  
1 MW EL, 1 Tankstelle  
Realisierung ab: Q1/2021



**Pionierprojekt eFarm**  
in Nordfriesland



**HY.Klettwitz**  
2 MW EL, 2 Tankstellen  
Realisierung ab: Q1/2021

## Your contact

Johannes Brock  
Key Account Manager  
Hydrogen  
T +49 4671 6074-632  
j.brock@gp-joule.de



GP JOULE GmbH  
Cecilienkoog 16  
25821 Reußenköge  
T 49 4671 6074-0 .  
F +49 4671 6074-199 .  
info@gp-joule.de  
www.gp-joule.de

**Thank you very  
much for your  
attention**